

PART OF SEC. 29, T.7N., R.3E., S.L.B. & M.

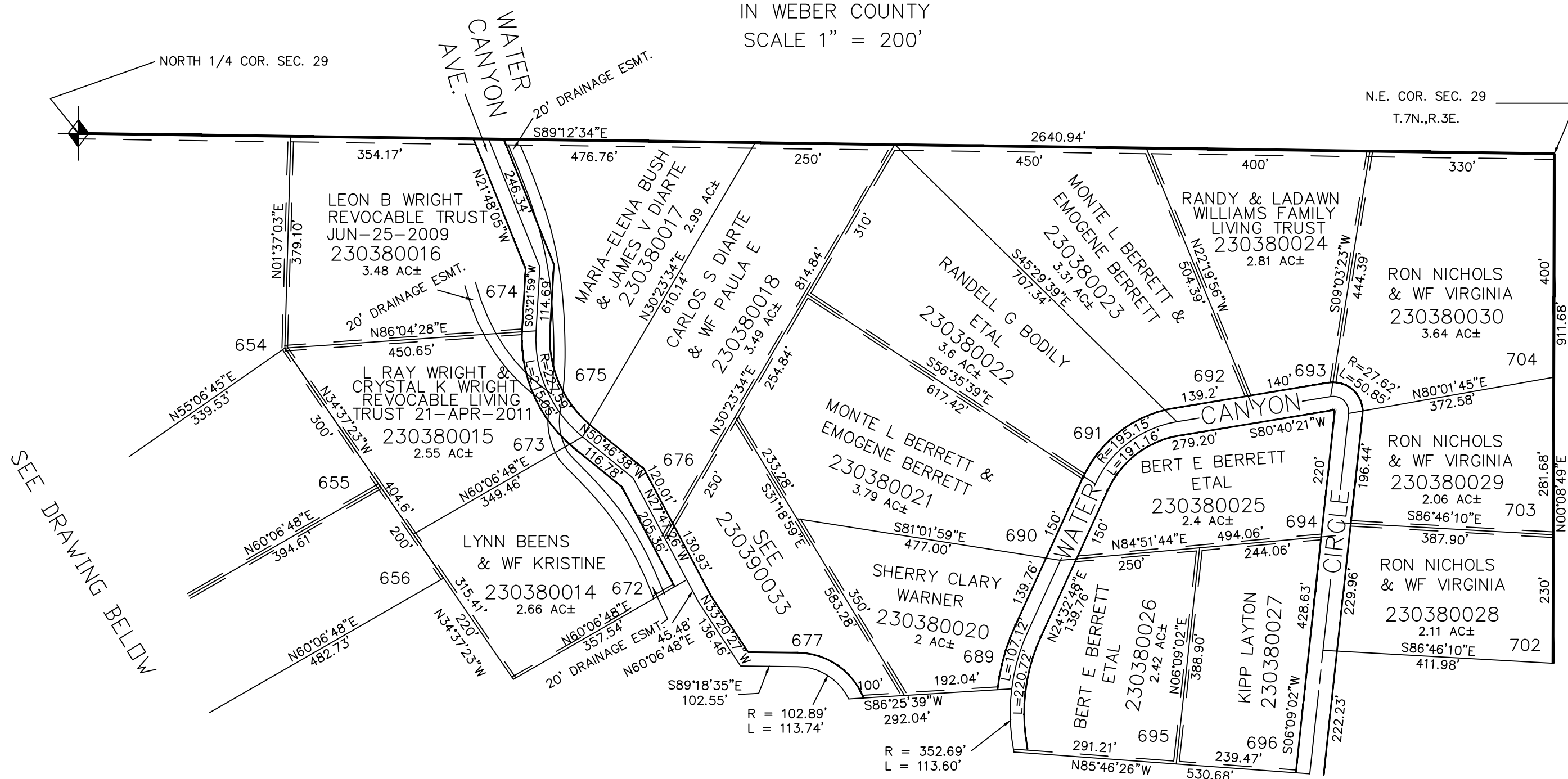
TAXING UNIT: 58

EVERGREEN PARK SUBDIVISION NO. 1

LOTS 551-552, 599-602, 650-656, 672-677, 689-696, 702-704

IN WEBER COUNTY

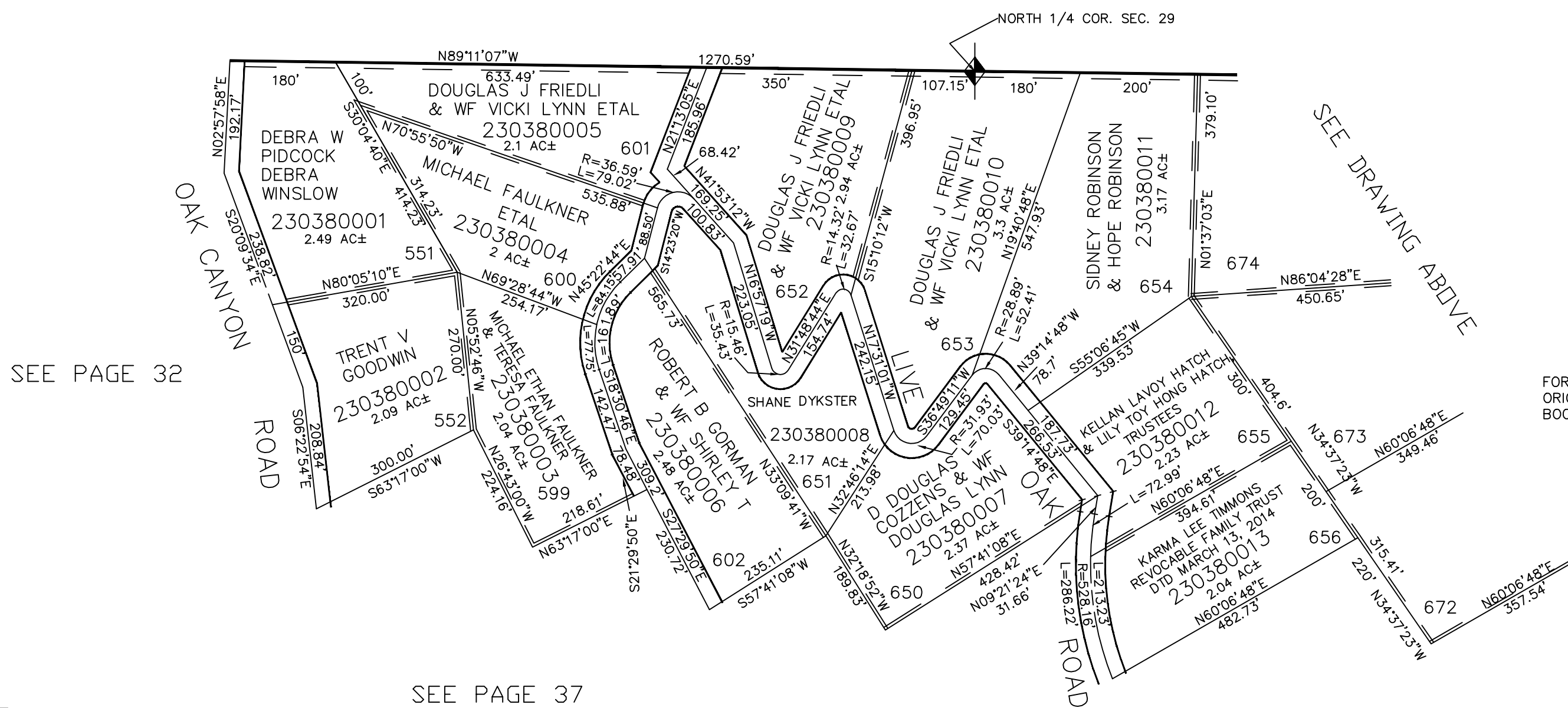
SCALE 1" = 200'



SEE PAGE 39

ALL DASHED LINES SHOWN ON LOT LINES ARE 10' UTILITY EASEMENTS UNLESS OTHERWISE NOTED.

ALL ROADS ARE PRIVATE R.O.W.'S



SEE PAGE 32

SEE DRAWING ABOVE

FOR COMPLETE ENG DATA SEE ORIGINAL DEDICATION PLAT IN BOOK 13, PAGE 56 OF RECORDS.

SEE PAGE 37